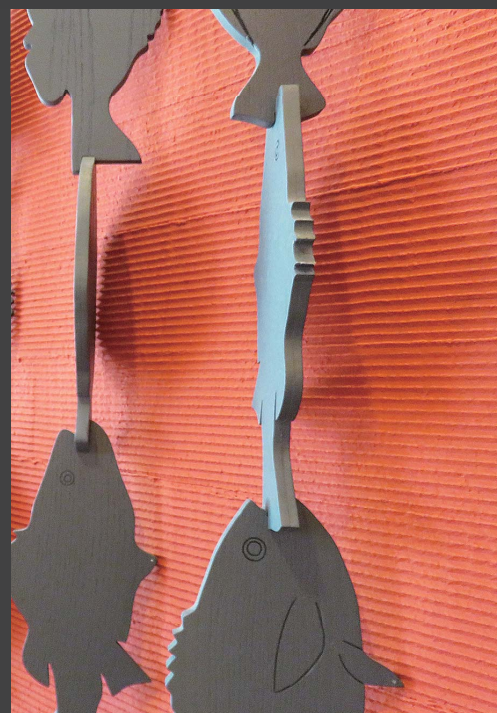
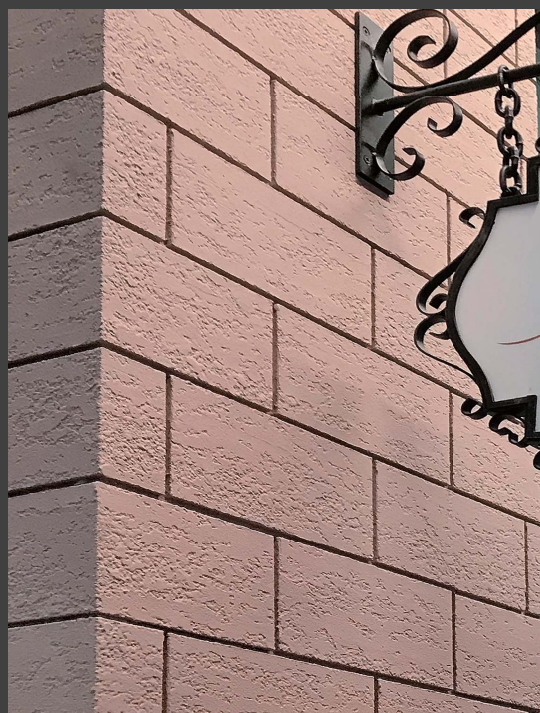


BELL ART

ベルアート

Multi-design and decorative finish coating



SKK

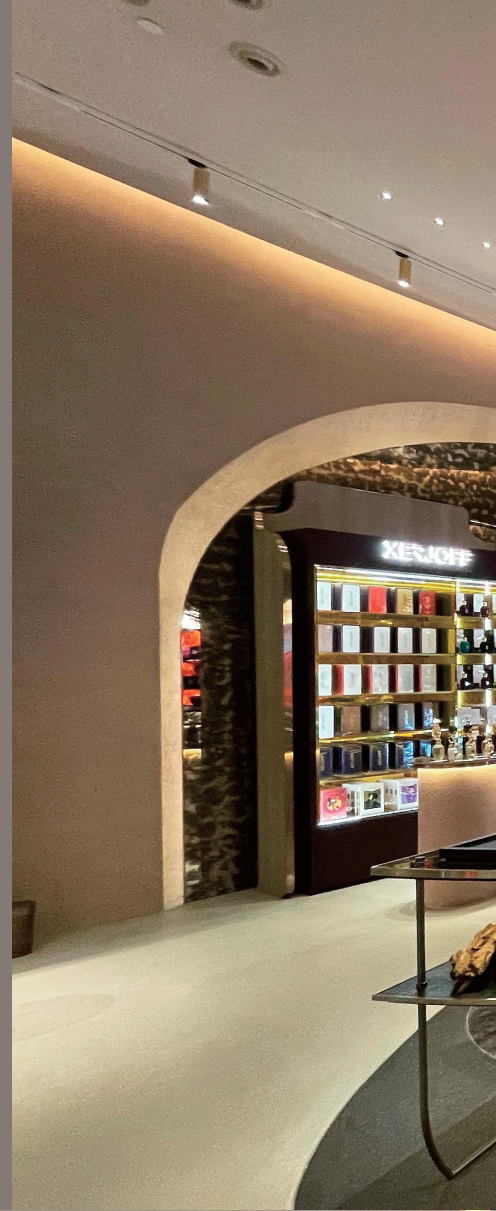
BELL ART

ベルアート

Multi-design and decorative finish coating

BELL ART is multi designing decorative finish. With excellent pattern created by special rollers, spray guns, trowels and brushes, BELL ART can help you create unique and imaginative design of your own.

Atelier De Prestige at ICON SIAM
Bangkok, Thailand
Pattern : Fancy



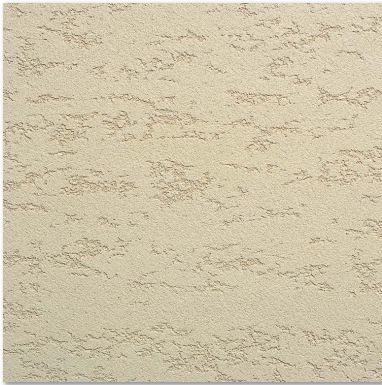


INDEX

Trowel Finish	3
Spray Finish	5
Roller Finish	6
Comb Finish	7
Brush Finish	8
Application Tools	9
NEW Rammed Earth Finish	10
NEW BELL ART FR Finish	11
Standard Colours	13
Job References	15

Trowel Finish

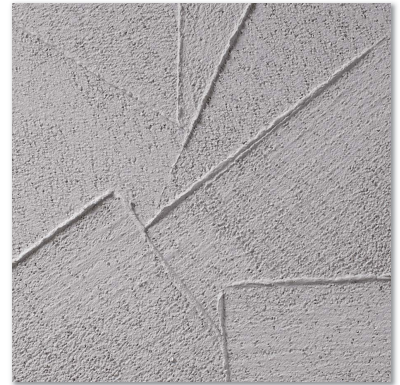
* Printed colours may be different from actual patterns. Check with sample boards before placing an order.



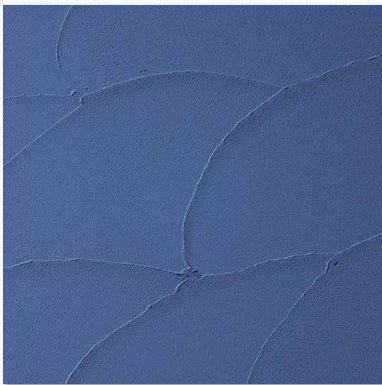
Travertine
Type of aggregates: SIPOSAND



Stamp
Type of aggregates: SIPOSAND



Stamp-L
Type of aggregates: Marble powder No.1, No.5



Wave
Type of aggregates: —



Wave (Double colour finish)
Type of aggregates: —



Rough wave
Type of aggregates: Marble powder No.1



Press-L
Type of aggregate: Marble powder No.5, No.8



Press-L (Double colour finish)
Type of aggregate: Marble powder No.5, No.8



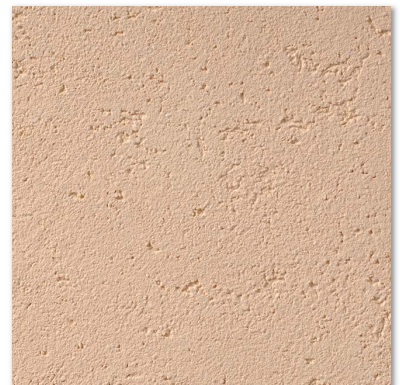
Rough wave (Double colour finish)
Type of aggregates: Marble powder No.1



Scroll
Type of aggregates: Marble powder No.1, No.5



Provence
Type of aggregates: SIPOSAND



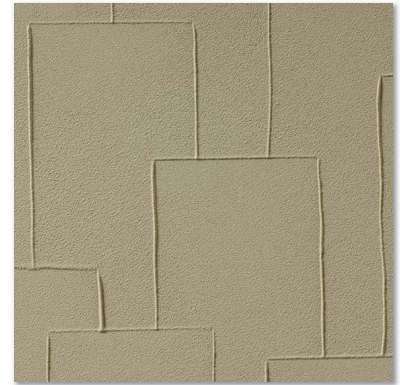
Fancy
Type of aggregates: Marble powder No.1, No.5



Press-S
Type of aggregate: SIPOSAND



Gelato
Type of aggregates: Marble powder No.1



Forest
Type of aggregates: —



Sandstorm
Type of aggregates: N-STONE



Splash
Type of aggregates: N-STONE



Vortex
Type of aggregates: N-STONE



Storm
Type of aggregates: —



Tail-S
Type of aggregates: Marble powder No.1, No.5



Tail-L
Type of aggregates: Marble powder No.1, No.8



Weathered rock
Type of aggregates: Marble powder No.1,3,5,8



Feather
Type of aggregates: Marble powder No.1, No.5



ONO SUSHI, Bangkok Thailand
Pattern: Stamp

Spray Finish

* Printed colours may be different from actual patterns. Check with sample boards before placing an order.



Flat (Smooth finish)
Type of aggregates: —



Lithin
Type of aggregates: SIPOSAND



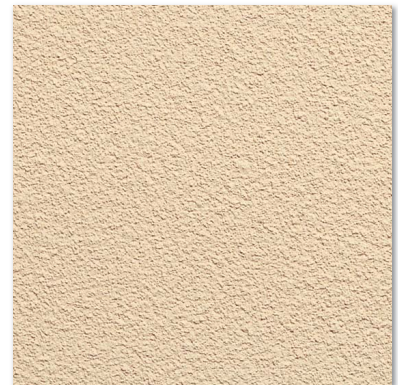
Juraku
Type of aggregates: Marble powder No.1



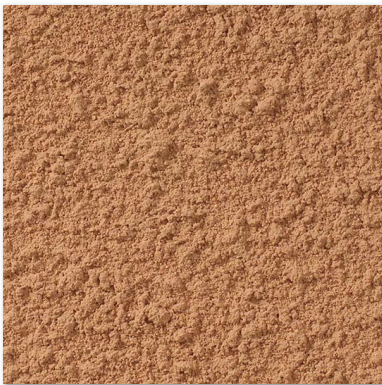
Spray tile
Type of aggregates: —



Spray tile (Press)
Type of aggregates: —



Orange peel
Type of aggregates: —



Stucco
Type of aggregates: SIPOSAND



Stucco (Press)
Type of aggregates: SIPOSAND



Ther LADPRAO 93, Bangkok, Thailand
Pattern: Flat



Terminal 21 Pattaya, Thailand
Pattern: Orange peel

* Printed colours may be different from actual patterns. Check with sample boards before placing an order.



Flower (Press)
Type of aggregates: —



Drop
Type of aggregates: —



Woody (Press)
Type of aggregates: —



Float (Press)
Type of aggregates: —



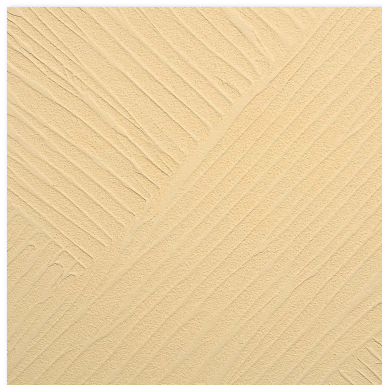
River (Press)
Type of aggregates: —



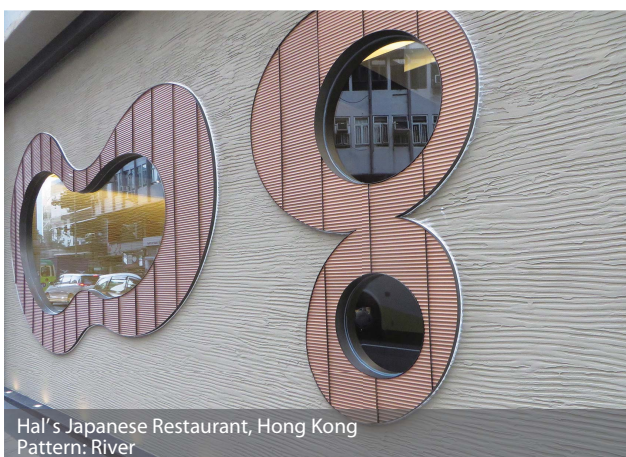
Lime tone
Type of aggregates: SIPOSAND



Canyon
Type of aggregates: SIPOSAND



Grass (Press)
Type of aggregates: —



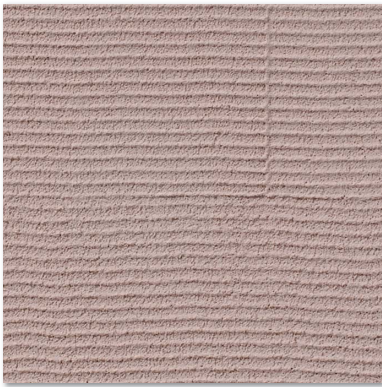
Hal's Japanese Restaurant, Hong Kong
Pattern: River



A shopping mall, Japan
Pattern: Canyon

Comb Finish

* Printed colours may be different from actual patterns. Check with sample boards before placing an order.



Scratch
Type of aggregates: N-STONE



Sand bar-S
Type of aggregates: —



Sand bar-L
Type of aggregates: SIPOSAND



Sand bar-FL
Type of aggregates: Marble powder No.1



Sand bar-AL
Type of aggregates: N-STONE



Pressed sand bar-L
Type of aggregates: SIPOSAND



Stripe
Type of aggregates: SIPOSAND



Kitchen Hidden, Hong Kong
Pattern: Sand bar-S



KOUEN, Bangkok Thailand
Pattern: Sand bar-L

Brush Finish

* Printed colours may be different from actual patterns. Check with sample boards before placing an order.



Hair line
Type of aggregates: —



Ripple
Type of aggregates: —



Draw
Type of aggregates: —



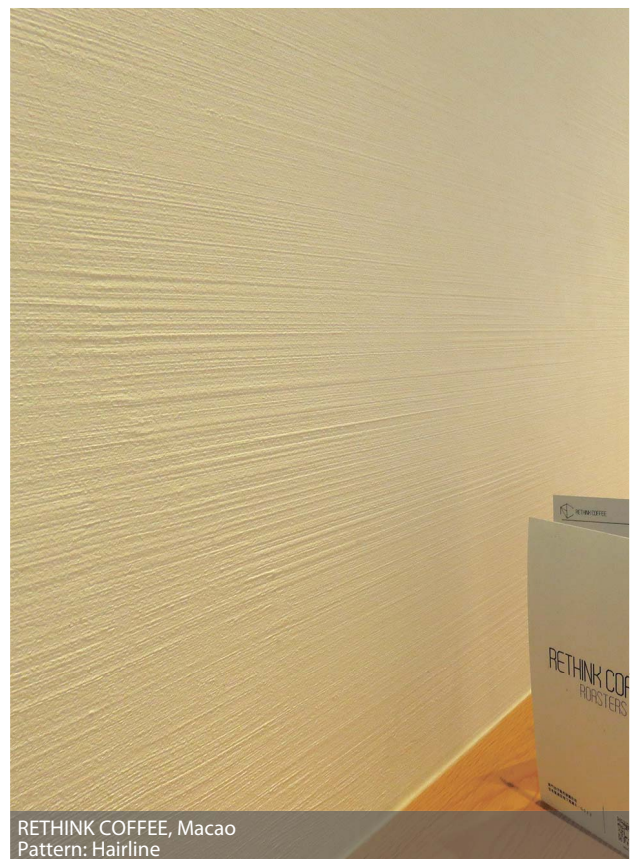
Sand-stone
Type of aggregates: Marble powder No.3



Sand-stone (Double colour finish)
Type of aggregates: Marble powder No.3



MINGMITR COFFEE by Malada Space, Chiang Mai, Thailand
Pattern: Sand-stone



RETHINK COFFEE, Macao
Pattern: Hairline

Application Tools



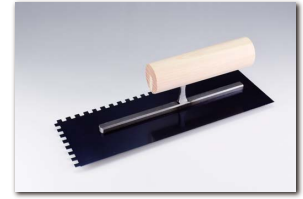
Sharp Trowel



Square Trowel



Wooden Trowel



SK Comb Trowel



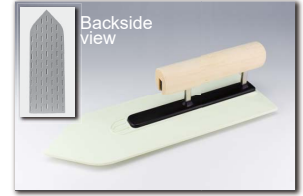
SK Comb Spatula



SK Wave Spatula-S (180mm)



SK Wave Spatula-L (180mm)



SK Finishing Trowel



Float Roller



River Roller



Woody Roller



Canyon Roller



Flower Roller



Wool Roller (Medium nap)



K-1 Roller



Plastic Roller



SK Design Brush



SK Almighty Gun



Lithin tip

Stucco tip

Tile tip

* Make sure to use the specified application tools.

* Be careful not to come in contact with solvent-based material such as thinner. Protrusions for patterning may become loose.

Suitable substrates

Concrete, cement rendering, ALC panels, slate boards, siding boards, old paint films (old film should be sound), etc.

Uses

Interior and exterior walls of houses, condominiums, hotels and shops, etc.

Hazards Information and Safety Precautions

Handle a product in accordance with SDS (Safety Data Sheet). Be careful about the safety control when conducting application work.

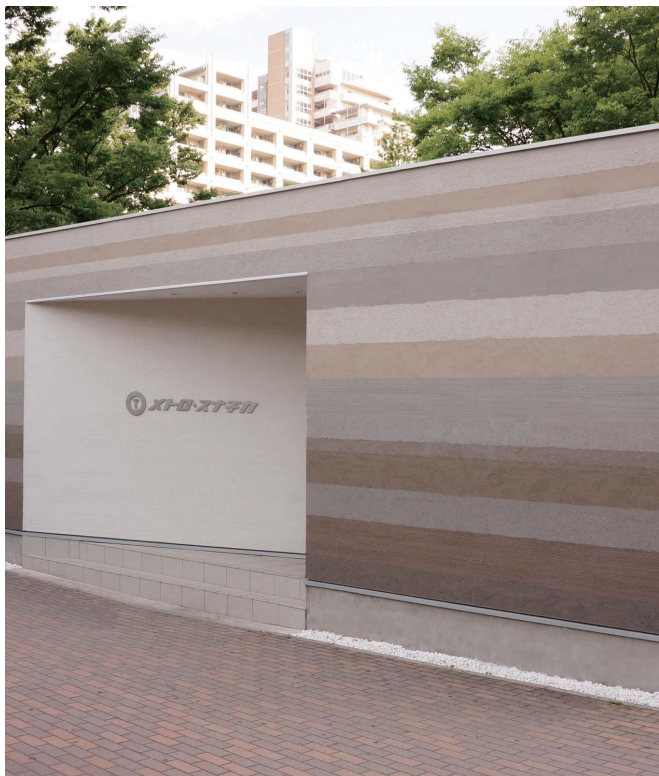
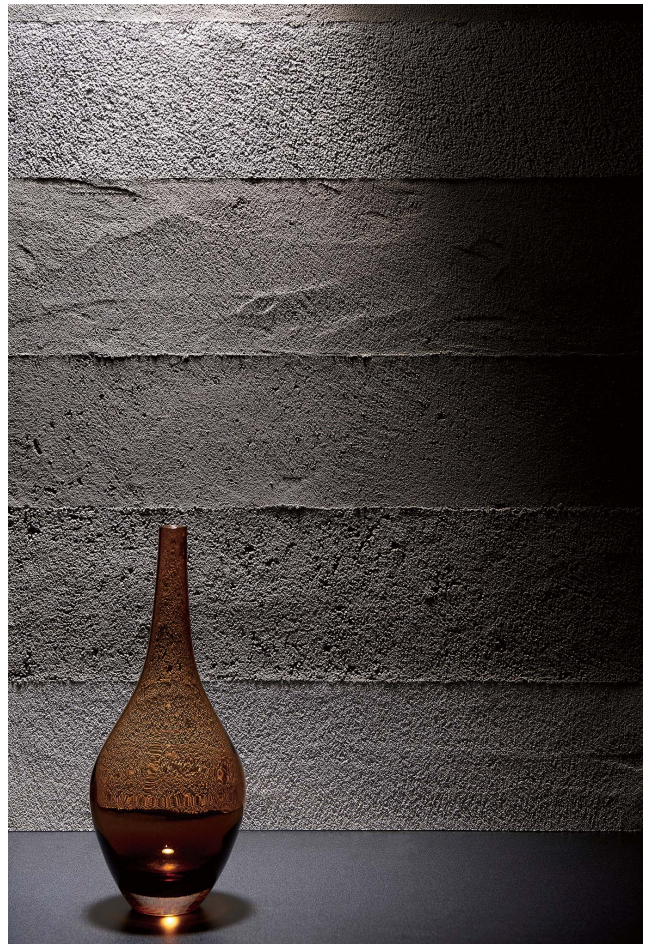
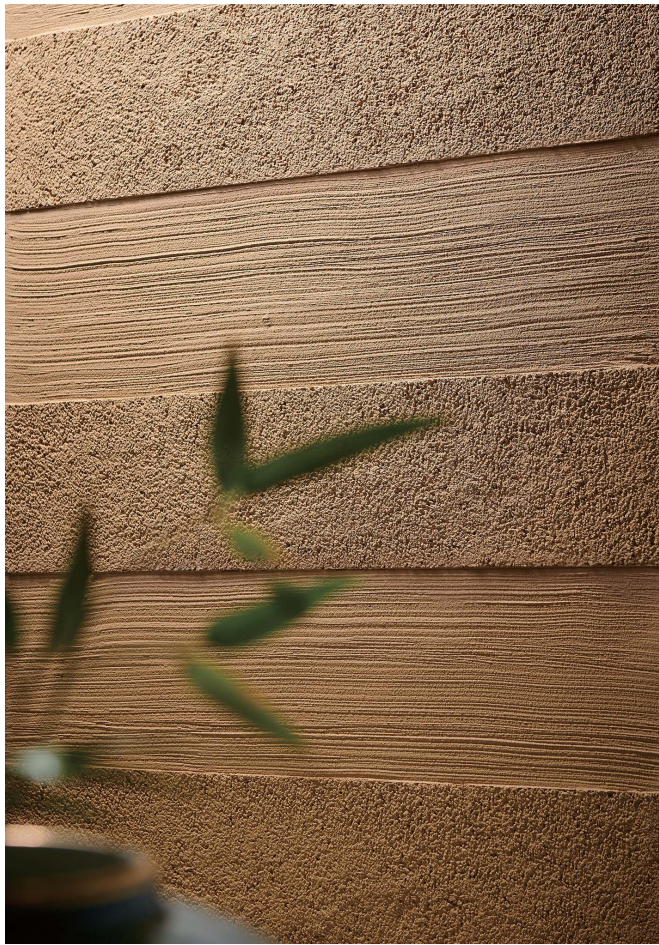
Precautions after Application

This material contains volatile chemical substances. Pay attention to safety measures for people having chemical sensitivity or allergies when handing over a project immediately after the application.

Rammed Earth Finish



The traditional technique "Rammed Earth Finish" is arranged with BELL ART. The stacked finish like a stratum creates a solid wall surface. For details, please contact your nearest sales office.



Metro Sunachika, Tokyo Japan



ISETAN department store, Malaysia

BELL ART FR Finish



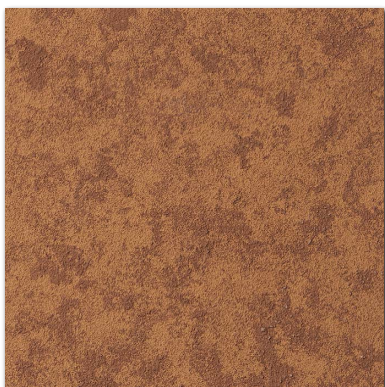
The vintage finish makes the space romantic. For details, please contact your nearest sales office.



Sandstorm
Type of aggregates: N-STONE



Lime tone (Groove finish)
Type of aggregates: SIPOSAND



Flat (smooth finish)
Type of aggregates: —



Vortex
Type of aggregates: N-STONE



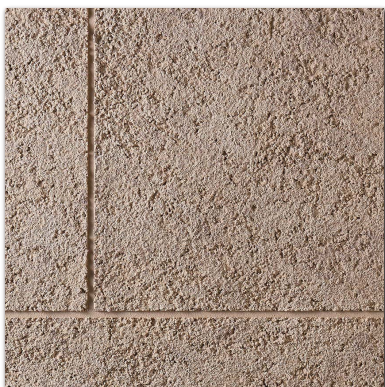
Juraku
Type of aggregates: Marble powder No.1



Sandstorm
Type of aggregates: N-STONE



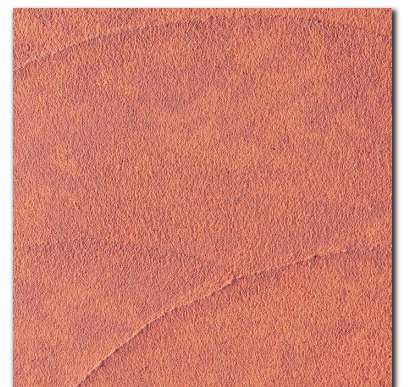
Stamp
Type of aggregates: SIPOSAND



Weathered rock
Type of aggregates:
Marble powder No.1,3,5,8



Press-L
Type of aggregates:
Marble powder No.5, No.8



Rough wave
Type of aggregates: Marble powder No.1

* Printed colours may be different from actual patterns. Check with sample boards before placing an order.

Standard Colours



* Printed colour is slightly different from actual material colour.

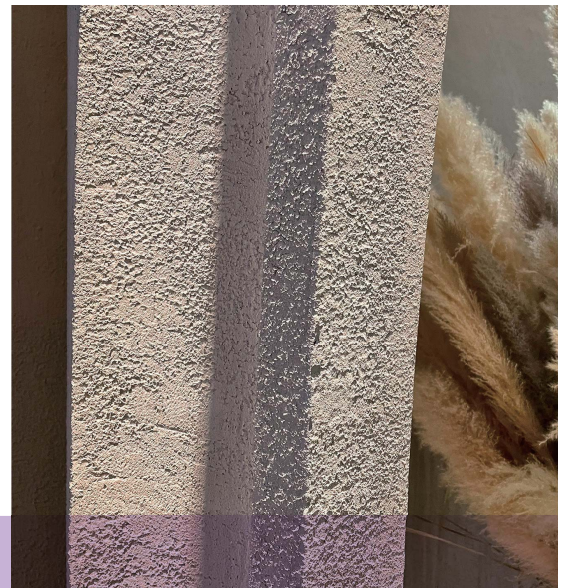
* These colours may be slightly different depending on lighting conditions. Check samples under natural sunlight away from direct sunshine.

* Be sure to check with sample board and/or catalogue for colour and pattern confirmation before placing an order.

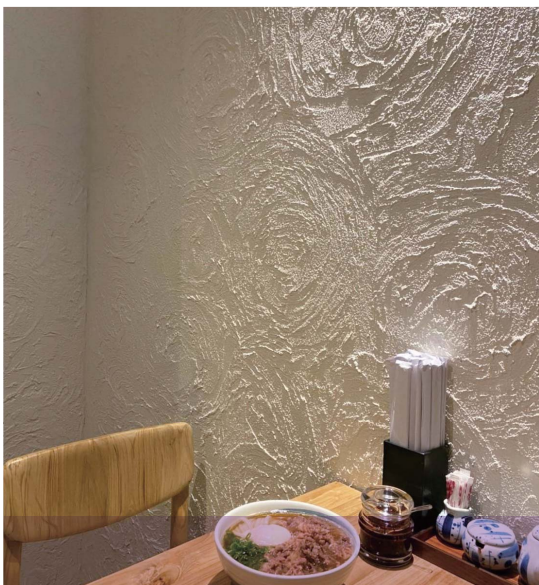
* Samples marked ※ are more costly due to material costs.



Job References



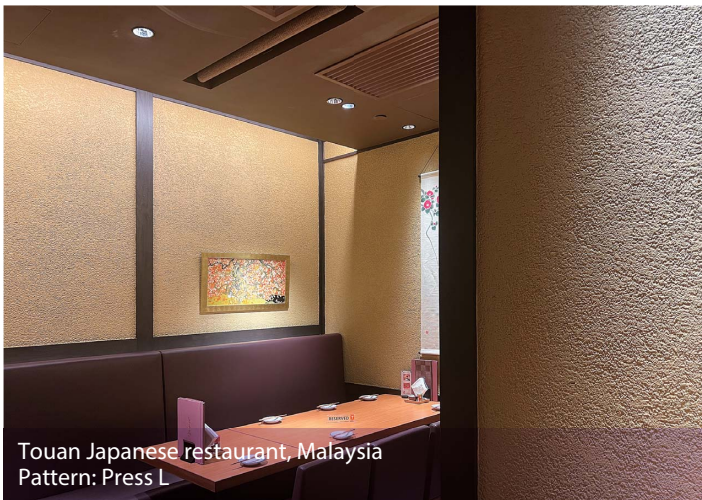
Atelier De Prestige at ICON SIAM, Bangkok Thailand
Pattern: Fancy



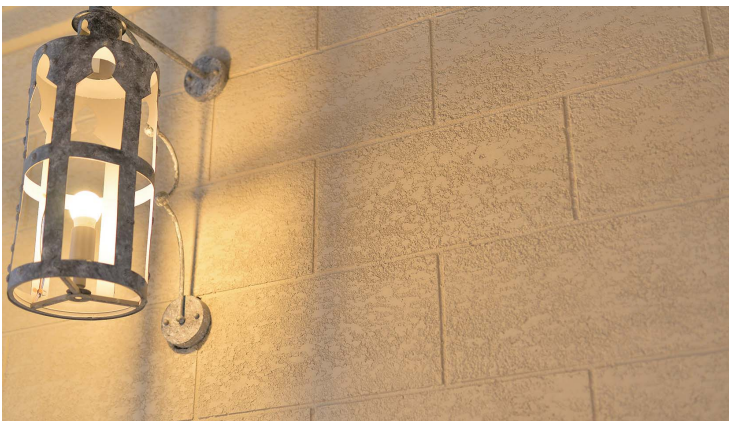
GIN UDON, Chiang Mai Thailand
Pattern: Sandstorm



SCB JULIUS BAER, Thailand
Pattern: Flat



Touan Japanese restaurant, Malaysia
Pattern: Press L



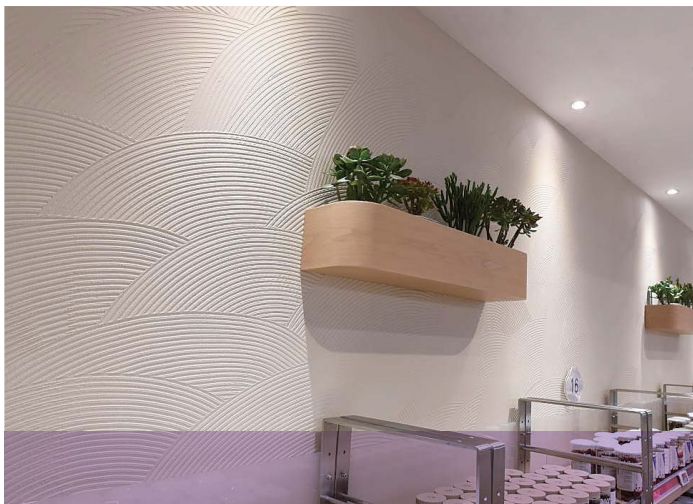
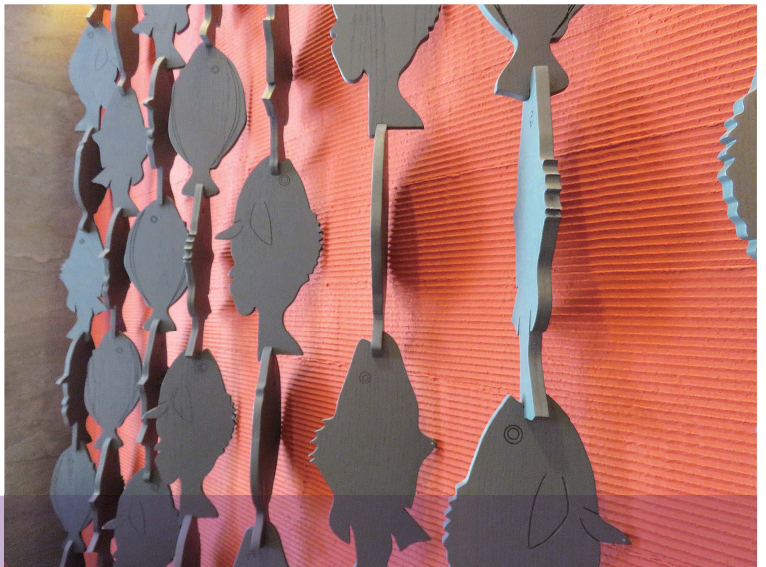
Terminal 21, Pattaya Thailand
Pattern: Press-L, Orange Peel



Job references



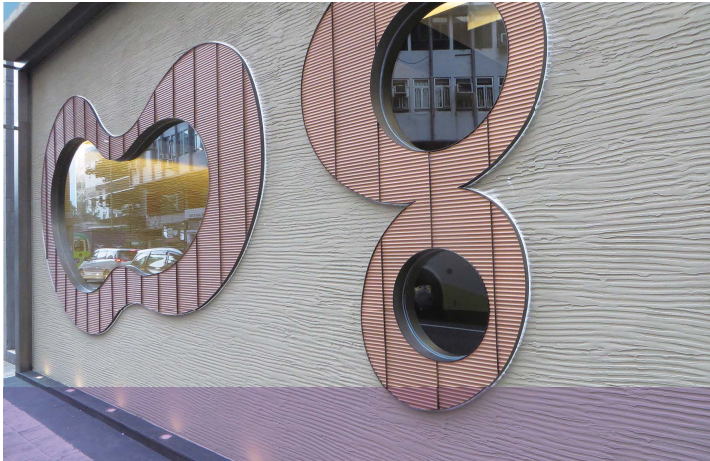
Itacho Sushi, Tai Po, Hong Kong
Pattern: Sand bar



HKJEBN shop at Nina Tower, Hong Kong
Pattern: Sand bar



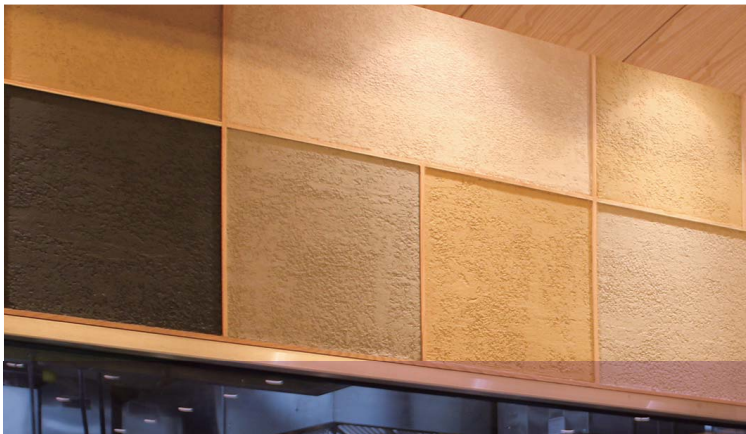
ONO SUSHI @Pracha Uthit-Ladprao, Bangkok Thailand
Pattern: Stamp



Hal's Japanese Restaurant, Causeway Bay, Hong Kong
Pattern: River



Zenpachi, Tsim Sha Tsui, Hong Kong
Pattern: Wave



A Japanese restaurant, Singapore
Pattern: Travertine



ISETAN department store, Malaysia
Pattern: Sand bar S



HEAD OFFICE IN JAPAN SK KAKEN CO., LTD.

5-25, 3-Chome, Nakahozumi, Ibaraki-City, Osaka, 567-0034, Japan
Tel: (81)72-621-7727 Fax: (81-72)621-7728
Web: <http://www.sk-kaken.co.jp>



SINGAPORE SKK (S) PTE. LTD.

14 Pandan Road, Singapore 609262
Tel: (65)6274-0020 Fax: (65)6278-0060
Web: <http://www.sk.com.sg>

Factory: SINGAPORE FACTORY

INDONESIA

PT. SKK KAKEN DISTRIBUSI PT. SKK KAKEN KONSTRUKSI

Setiabudi Atrium Building, 5th floor, Suite 506, Jl. H. R. Rasuna Said Kav. 62,
Jakarta, Indonesia 12920
Tel: (62)21-5210401(5210402) Fax: (62)21-5210403

Factory: PT. SKK KAKEN INDONESIA

HONG KONG

SKK (H.K.) CO., LTD.

38/F, Lee & Man Commercial Center, 169 Electric Road, Fortress Hill, Hong Kong
Tel: (852)2529-3968 Fax: (852)2527-0299

Web: <http://www.sk.hk.com.hk>

MALAYSIA

SK KAKEN (M) SDN. BHD.

Suite 13.01, Level 13, Centrepoint South, The Boulevard, Mid Valley City,
Lingkaran Syed Putra, 59200 Kuala Lumpur, Malaysia
Tel: (60)3-2282-9800 Fax: (60)3-2282-9810

Web: <http://www.sk.com.my>

Branch Office: Johor Bahru, Kuantan, Penang

Factory: SKK CHEMICAL (M) SDN. BHD.

THAILAND

SK KAKEN (THAILAND) CO., LTD.

518/5 Maneeya Center Building 6th Floor, Pleonchit Rd.,
Lumpini, Pathumwan, Bangkok 10330, Thailand
Tel: (66)2-652-0600(0585)(0858) Fax: (66)2-652-0639

Web: <http://www.sk.co.th>

Branch Office: Chiang Mai

Factory: SKK CHEMICAL (THAILAND) CO., LTD.

CHINA

SIKOKU KAKEN (SHANGHAI) CO., LTD.

Units3-7, 25F, Far East International Plaza A,
No.319 Xianxia Road, Changning District, Shanghai, China
Tel: (86)21-6209-9169 Fax: (86)21-6209-9189

Web: <http://www.sk.com.cn>

Branch Office:

Beijing, Guangzhou, Shenyang, Wuhan, Tianjin, Changchun, Xi'an, Chongqing,
Kunming, Nanjing, Suzhou, Hangzhou, Hefei, Henan, Chengdu, Shenzhen

Factory: SHANGHAI FACTORY