



Brilliant soil wall-like ceramic based decorative coating

PIKASHINE

SK KAKEN CO., LTD.

Brilliantsoil wall-like ceramic based decorative coating

PIKASHINE

Beyond the stone and brightness

PIKASHINE is a new type of decorative coatings. Combining the texture of natural soil, sand and stone, PIKASHINE provides totally new designs with touch of natural beauty.

Mixing the warm texture of earth, the fine texture of sand, and the rough texture of stone, PIKASHINE creates brilliant, new type of design that conventional products have never been made.

Features

Excellent design

Combining the texture of natural soil, sand and stone, PIKASHINE provides natural atmosphere.

Strong weather resistance

Using acrylic silicone resin as bonding materials, PIKASHINE provides excellent weather resistance and high durability over a long time.

Crack resistance

Coupled with elastic mid-coat, PIKASHINE covers hairline cracks and prevents rainwater from penetrating into substrate.

Mould and algae resistance

PIKASHINE, with its special specification, provides strong resistance to microorganism such as mould and algae, and maintains healthy environment over a long time.

High safety level

Because of being water based type, PIKASHINE is safe and environmentally friendly. Different from solvent type materials, it does not cause poisoning and fire.

Suitable substrates

Concrete, cement rendering, PC panels, ALC panels, slate boards, siding boards, etc.

Uses

For interior and exterior of houses, condominiums, etc.

For interior and exterior of hotels, shops, etc.



SHE-001



SHE-041



SHE-021



SHE-003



SHE-042



SHE-026



SHE-004



SHE-043



SHE-023



SHE-105



SHE-144



SHE-125



SHE-016



SHE-012



SHE-013



SHE-017



SHE-031



SHE-014



SHE-019



SHE-032



* SHE-007



SHE-135



SHE-139



SHE-110

*Printed colour may be different from actual material colour.

*These colours may be slightly different depending on lightning conditions. Check samples under natural sunlight away from direct sunshine.

*Check with sample board and/or catalogue for colour confirmation before placing order.



Standard application specification

1 Spray finish

(20°C, 65%RH)

Process	Material	Dilution ratio (wt. %)	Consumption (kg/m²)	No. of coat	Interval (hr)			Remarks
					In process	In processes	Final curing	
Surface treatment* ¹	· Dry the base surface well to bring water content to a maximum of 10% and pH to 10 or less. · Completely remove any dirt or dust, and repair and smooth out unevenness and scratches.							–
Undercoat	SK SAND COLOUR BASE	100	0.20 – 0.25	1 - 2	2 or more	2 or more	–	Wool Roller Brush Spray
	WATER	5 – 15	–					
Base coat	PIKASHINE BASE	100	2.5 – 3.0	1	–	–	24 or more	Almighty Gun Nozzle Size: 8 – 10mm Pressure: 392 – 588 kPa
	WATER	1 – 3	–					

2 Sand bar-L finish

(20°C, 65%RH)

Process	Material	Dilution ratio (wt. %)	Consumption (kg/m²)	No. of coat	Interval (hr)			Remarks
					In process	In processes	Final curing	
Surface treatment*¹	· Dry the base surface well to bring water content to a maximum of 10% and pH to 10 or less. · Completely remove any dirt or dust, and repair and smooth out unevenness and scratches.							–
Undercoat	SK SAND COLOUR BASE	100	0.20 – 0.25	1 - 2	2 or more	2 or more	–	Wool Roller Brush Spray
	WATER	5 – 15	–					
Base coat 1	PIKASHINE BASE	100	1.2 – 1.4	1	–	4 or more	–	Almighty Gun Nozzle Size: 6.5 – 8mm Pressure: 392 – 588 kPa
	WATER	3 – 5	–					
Base coat 2	PIKASHINE BASE	100	3.0 – 3.5	1	–	Within 5 min.	–	Almighty Gun Nozzle Size: 8 – 10 mm Pressure : 392 – 588 kPa
	WATER	0 – 2	–					
Pressing	Make a pattern with SK Wave spatula L.				–	–	24 or more	SK Wave spatula L

3 Travertine finish

(20°C, 65%RH)

Process	Material	Dilution ratio (wt. %)	Consumption (kg/m ²)	No. of coat	Interval (hr)			Remarks
					In process	In processes	Final curing	
Surface treatment* ¹	· Dry the base surface well to bring water content to a maximum of 10% and pH to 10 or less. · Completely remove any dirt or dust, and repair and smooth out unevenness and scratches.							–
Undercoat	SK SAND COLOUR BASE	100	0.20 – 0.25	1 - 2	2 or more	2 or more	–	Wool Roller Brush Spray
	WATER	5 – 15	–					
Base coat 1	PIKASHINE BASE	100	1.2 – 1.4	1	–	4 or more	–	Almighty Gun Nozzle Size: 6.5 – 8mm Pressure: 392 – 588 kPa
	WATER	3 – 5	–					
Base coat 2	PIKASHINE BASE	100	2.5 – 3.0	1	–	Within 5 min.	–	Almighty Gun Nozzle Size: 8 – 10 mm Pressure : 392 – 588 kPa
	WATER	0 – 2	–					
Pressing	Make a pattern with a trowel.				–	–	24 or more	Trowel

4 Hairline finish

(20°C, 65%RH)

Process	Material	Dilution ratio (wt. %)	Consumption (kg/m ²)	No. of coat	Interval (hr)			Remarks
					In process	In processes	Final curing	
Surface treatment*1	· Dry the base surface well to bring water content to a maximum of 10% and pH to 10 or less. · Completely remove any dirt or dust, and repair and smooth out unevenness and scratches.							—
Undercoat	SK SAND COLOUR BASE	100	0.20 – 0.25	1 - 2	2 or more	2 or more	—	Wool Roller Brush Spray
	WATER	5 – 15	—					
Base coat 1	PIKASHINE BASE	100	1.2 – 1.4	1	—	4 or more	—	Almighty Gun Nozzle Size: 6.5 – 8mm Pressure: 392 – 588 kPa
	WATER	3 – 5	—					
Base coat 2	PIKASHINE BASE	100	2.5 – 3.0	1	—	Within 5 min.	—	Almighty Gun Nozzle Size: 8 – 10 mm Pressure: 392 – 588 kPa
	WATER	0 – 2	—					
Pressing	Make a pattern with a brush.				—	—	24 or more	SK Design brush

- 1) In case of two coats applied to surface with high absorption, allow more than 2 hours (20°C, 65%RH) for an interval between coats.
- 2) As PIKASHINE BASE containing natural materials, it may cause variation of colour shades.
- 3) Confirm colour and pattern by mock-up sample at site prior to the application.
- 4) For application, use materials of the same lot number for the same project. If not possible and using materials of the different lot number, use it at the different elevation at the project.
- 5) Store materials at cool and dark place away from rainwater and moisture. Avoid a place where temperature is high or below 0°C.
- 6) The surface may freeze at the coldest time of the winter. DO NOT apply materials on the icy surface, as they may not adhere completely.
- 7) Read cautions written on containers thoroughly before use. Refer to MSDS (Material Safety Data Sheet) for the details.
- 8) Pay close attention to the following cautions when handling materials.
 - a Use in well-ventilated place.
 - b Avoid exposing skin to the materials when handling. Wear an anti-dust mask, protective glasses, impermeable protective gloves, and aprons if necessary. In addition, apply protective cream on face, hands, and arms to protect skin from direct contact with the materials.
- 9) Seal the containers tightly and keep them away from children and people from outside.
- 10) For further information, ask your nearest SKK sales.

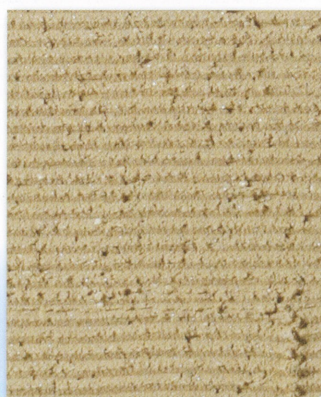
Packing Style

	Material	Packing	Coverage
Undercoat	SK SAND COLOUR BASE	16kg /can	64~80 m ² /can
Base coat	PIKASHINE BASE	20kg /can	4~8 m ² /can

1 Spray finish



2 Sand bar-L finish



3 Travertine finish



4 Hairline finish





HEAD OFFICE IN JAPAN

SK KAKEN CO.,LTD.

5-25, 3-Chome, Nakahozumi, Ibaraki-City, Osaka, 567-0034, Japan
Tel: (81-72)621-7727 Fax: (81-72)621-7728
Web: <http://www.sk-kaken.co.jp>



SINGAPORE

SKK (S) PTE.LTD.

14 Pandan Road, Singapore 609262
Tel: (65)6274-0020 Fax: (65)6278-0060
Web: <http://www.sk-k.com.sg>
Factory : SKK (S) PTE.LTD. FACTORY

HONG KONG

SKK (HK) CO.,LTD.

Suites 1001-7, 10/F., Dah Sing Financial Centre,
108 Gloucester Rd, Wanchai, Hong Kong
Tel: (852)2529-3968 Fax: (852)2527-0299
Web: <http://www.sk-khk.com.hk>

MALAYSIA

SK KAKEN (M) SDN.BHD.

Suite 13.01, Level 13, Centrepont South, The Boulevard, Mid Valley City,
Lingkaran Syed Putra, 59200 Kuala Lumpur, Malaysia
Tel: (60)3-2282-9800 Fax: (60)3-2282-9810
Web: <http://www.sk-k.com.my>
Branch Office : Johor Baru, Kuantan, Penang
Factory : SKK CHEMICAL (M) SDN.BHD.

THAILAND

SK KAKEN (THAILAND) CO.,LTD.

161/1 SG Tower 5th Floor, Soi Mahadlek Luang 3,
Ratchadamri Rd, Lumpini, Pathumwan, Bangkok 10330, Thailand
Tel: (66)2-651-8722 Fax: (66)2-651-8721
Web: <http://www.sk-k.com.th>
Factory : SKK CHEMICAL (THAILAND) CO., LTD.

KOREA

SK KAKEN (KOREA) CO.,LTD.

1414, Samheung Officetel, 705-9, Yeoksam-dong, Gangnam-gu, Seoul, Korea
Tel: (82)2-562-1592 Fax: (82)2-562-1594
Web: <http://www.sk-kaken.com>
Factory : SEOUL FACTORY

CHINA

SIKOKU KAKEN (SHANGHAI) CO.,LTD.

Units 3-7, 25F, Far East International Plaza A,
No.319 Xianxia Road, Changning District, Shanghai, China
Tel: (86)21-6209-9169 Fax: (86)21-6209-9189
Web: <http://www.sk-k.com.cn>
Branch Office :
Beijing, Guangzhou, Shenyang, Dalian, Wuhan, Tianjin, Zhangchun, Xi'an,
Chongqing, Kunming, Nanjing, Suzhou, Hangzhou
**Factory :
SHANGHAI FACTORY
SIKOKU KAKEN (LANGFANG) CO.,LTD.**

INDIA

SKK INDIA LIAISON OFFICE

No.142, 2nd Main, Domlur 2nd Stage, Indiranagar Bangalore- 560038, India
Tel: (91)80-4148-2831 Fax: (91)80-4148-2836

SKK INDIA DELHI LIAISON OFFICE

612, Ansals Chamber – II, (9) Bhikaji Cama Place, New Delhi 110 060, India
Tel: (91)11-4654-1999 Fax: (91)11-4654-1998

VIETNAM

HCMC REPRESENTATIVE OFFICE

Unit A1, 1th Floor, Y Ban Building, 69 Thach Thi Thanh St., Tan Dinh Ward,
Dist.1, HCMC, Vietnam
Tel: (84)8-2220-0983 Fax: (84)8-2220-0987

HANOI REPRESENTATIVE OFFICE

B13 Lane 34, Nguyen Thi Dinh Street, Cau Giay District, Hanoi, Vietnam
Tel: (84)4-3556-1151 Fax: (84)4-3556-1153

INDONESIA

JAKARTA REPRESENTATIVE OFFICE

Jl.Kamal Muara VII Komplek Pergudangan Sentra Industri Terpadu (SIT-PIK)
Tahap 2 Blok GI No 2 Kel. Kamal Muara Kec. Penjaringan, Jakarta Utara 14470
Tel: (62)21-569-82985 Fax: (62)21-569-82984